

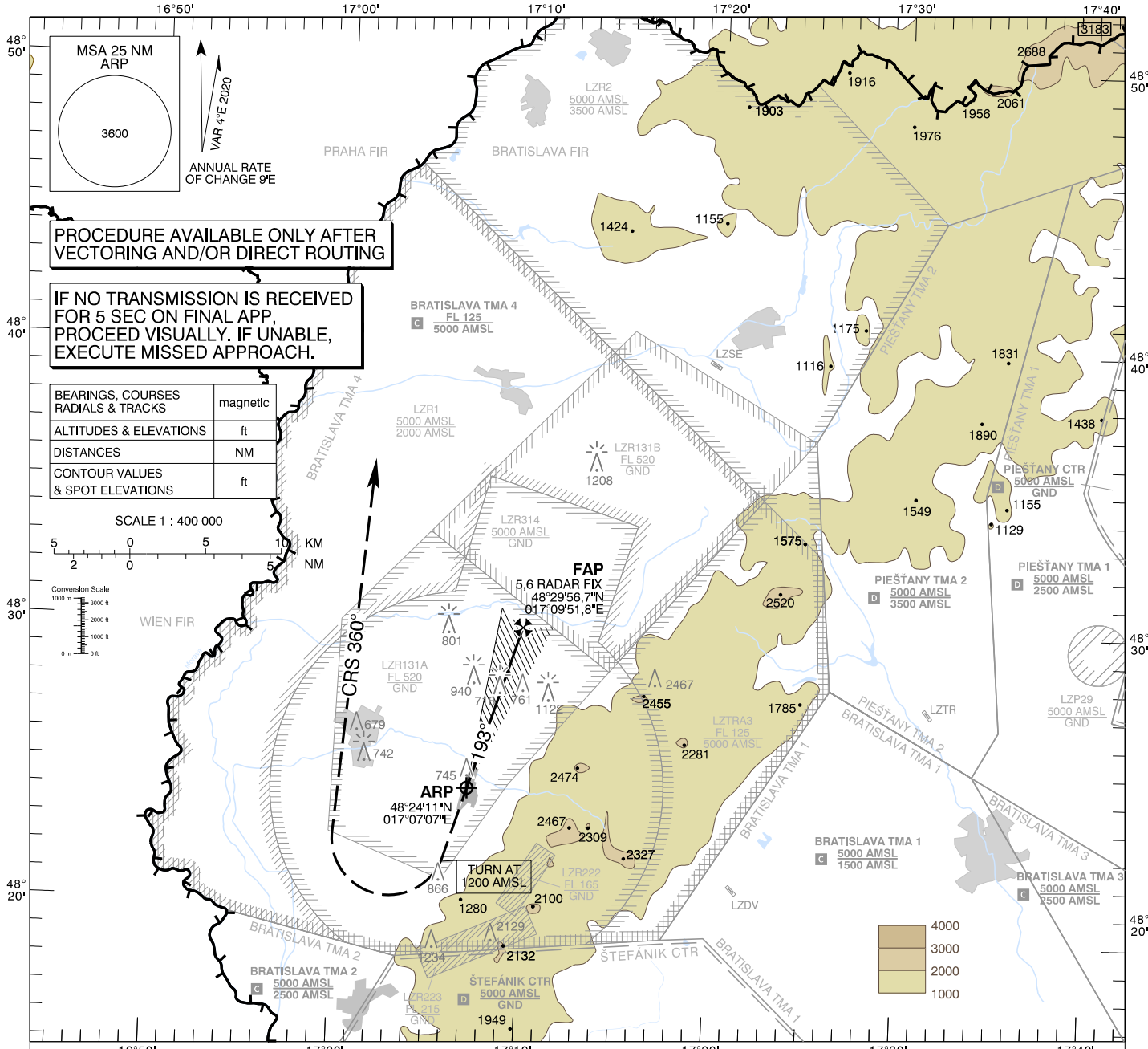
**INSTRUMENT  
APPROACH  
CHART - ICAO**

**TRANSITION ALTITUDE**  
10 000 ft

AD ELEV 689 - 25 hPa  
THR RWY 19 ELEV 686 - 25 hPa

**MALACKY PRECISION 127,150**  
**MALACKY RADAR 120,750 (259,625)**  
**MALACKY TOWER 129,575 (120,750)**

**MALACKY (LZMC)  
PAR RWY 19  
ACFT CAT A/B/C/D**

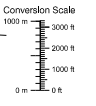
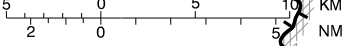


**PROCEDURE AVAILABLE ONLY AFTER  
VECTORIZING AND/OR DIRECT ROUTING**

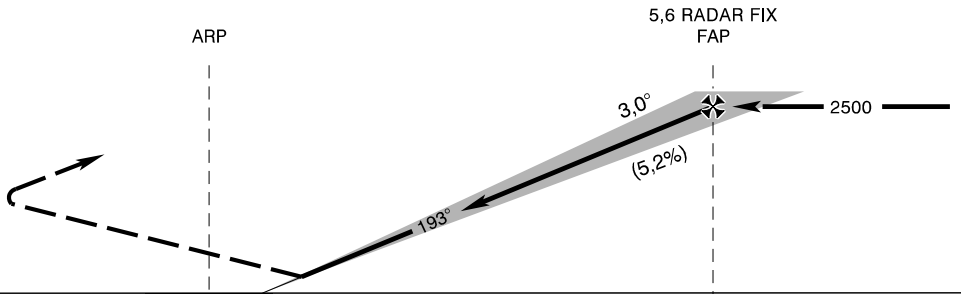
**IF NO TRANSMISSION IS RECEIVED  
FOR 5 SEC ON FINAL APP,  
PROCEED VISUALLY. IF UNABLE,  
EXECUTE MISSED APPROACH.**

BEARINGS, COURSES RADIALS & TRACKS	magnetic
ALTITUDES & ELEVATIONS	ft
DISTANCES	NM
CONTOUR VALUES & SPOT ELEVATIONS	ft

SCALE 1 : 400 000



**MISSED APPROACH**  
Climb STRAIGHT AHEAD, at 1200 AMSL  
turn RIGHT to CRS 360°, climbing to 4000 AMSL,  
then as directed by RADAR CONTROLLER.  
MAX IAS 185 kt until established on CRS 360°.  
No turn before ARP.



**TCH 56,8**

THR RWY 19 ELEV 686 - 25 hPa

NM to/from THR RWY 19

OCA (OCH)	ASC	A	B	C	D
Straight - in Approach	2,5%	ft 951 (265)	963 (277)	971 (285)	982 (296)
Circling (* see Note)		ft 1120 (431)	1190 (501)	1650 (961)	1810 (1121)
VIS		m 1800	2800	3600	4600

\*Note: Not authorized  
EAST  
of the EXTD RCL



RADAR FIX	NM	7,0	6,0	5,0	4,0	3,0	2,0	1,0
ALTITUDES	ft	2958	2628	2300	1974	1649	1326	1005

Ground speed	kt	70	90	100	120	140	160	180
Rate of descent (5,2%)	ft/min	372	478	531	637	743	849	955

CHANGES: new chart